



TM



MERCURY
MerCruiser

**Mercury MerCruiser
Petrol Sterndrives & Inboards 2006**



www.marinepower.com



MERCURY MERCRUISER® CONTINUOUS INNOVATION

Over 40 years ago, MerCruiser® set out to make boating a more pleasurable experience by maximising performance and minimising maintenance.

In the intervening years, we've committed ourselves to building on that initial promise which is why MerCruiser is the worldwide industry leader in sterndrive and inboard power. Whatever your boating choice – whether you run a hot sportsboat, spirited runabout, fine family cruiser, serious fishing craft or hard driven workboat – MerCruiser provides the big power pleasure and reliability.





FLUIDLY SMOOTH. DIGITALLY PRECISE



Simply put, the **Digital Throttle & Shift (DTS) System** brings digital precision to the shifting process by totally eliminating traditional cables. Utilizing the power of our PCM 555 controller with a special purpose-built shift solenoid and electronic throttle body, DTS provides an uncommonly smooth, precise shifting feel with responsive throttle control – all with minimal effort. The system is now available on nine additional models in the MerCruiser line up extending the options on Bravo sterndrive models from the 5.0 MPI to the MX 6.2 MPI and the 350 MAG and MX 6.2 MPI inboards.



TURN-KEY STARTING (TKS) SYSTEM FOR CARBURETTED ENGINES

MerCruiser developed the new TKS System, which utilizes a redesigned carburettor with an automatic fuel-enrichment system instead of a traditional choke. TKS produces instant, effortless starts at the turn of a key – even in cold weather. Turn-key starting is now standard on all carburetted sterndrive and inboard engines. The redesigned carburettor can also be retrofitted to MerCruiser products manufactured since 1997.



GEN III COOL FUEL MODULE

This integrated unit packages fuel pumps, pressure regulator, water-separating fuel filter, and fuel cooler into one easy-to-access unit. The design boasts 16 fewer connection points for added reliability and reduces operating sound levels by 8 decibels. This third-generation version is standard on all Bravo® MPI and inboard MPI models.



496 MAG/8.15 SERPENTINE BELT SYSTEM

Noise and vibration are reduced and overall durability and reliability increased by this new belt drive system with a dynamic belt tensioner.





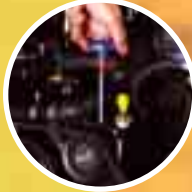
STERNDRIVES

MEETING YOUR SPECIFIC NEEDS

135 hp – 425 hp

ALPHA WATER DRAIN SYSTEM

This water drain system is easy to access and operate. It's available on all SmartCraft MPI models coupled to the Alpha® drive.



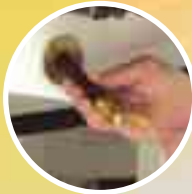
EASY-ACCESS DRIVE LUBE MONITOR

Easily accessed on all petrol sterndrive engines, the drive lubricant can be checked and refilled from inside the boat. Drive lube level is also electronically monitored through Engine Guardian or Audio Warning System.



EASY OIL DRAIN SYSTEMS

Changing your boat's engine oil has never been easier or faster. Our easy oil drain system is standard on all petrol sterndrive models.



POWER TRIM XD

Couples precise trim position with drive protection to cushion the drive unit during impact. A hydraulic memory system returns the drive to the previous trim position so you maintain steering control.

SHIFT SYSTEM REFINEMENT

The shift system on all sterndrives has been improved to provide smoother, easier shifting.

MERCATHODE® CORROSION PROTECTION

MerCathode actively protects the underwater hardware from galvanic corrosion. MerCathode electronic corrosion protection system is standard on all Bravo drives and available as a kit on Alpha drives. For added peace of mind, MerCruiser offers the industry's only three-year limited warranty against corrosion failure.

PROTECTIVE ANODES

Bolstering the MerCathode corrosion protection system, all Bravo Three drives feature additional protective anodes on the anticavitation plate and propshaft.



Every boater has unique requirements, which is why MerCruiser offers petrol sterndrives to meet almost every application from fishing, to cruising, to racing.

Every new petrol multi-port fuel injected (MPI) sterndrive comes complete with our performance-enhancing SmartCraft® technology which monitors and fine-tunes your engine for maximum efficiency thanks to features such as multi-port fuel injection and Engine Guardian™. The result is a powerful combination of protection and performance.

Mercury MerCruiser's highly responsive, carburetted petrol power runs from 135 hp propshaft to 250 hp, with a choice of four universally popular sterndrive models, all with excellent power-to-weight ratios. These carburettor MerCruisers are outstanding value per horsepower.



AUDIO WARNING SYSTEM

Our Audio Warning System warns you of low oil pressure, high engine temperature, excessive transmission temperatures (inboards), and low drive lubricant (sterndrives). Standard on all petrol models, including the 3.0L sterndrive.



ALPHA ONE

Straightforward, solid, versatile, fast and the biggest selling sterndrive of all time. The ideal for runabouts and small cruisers.



BRAVO ONE

This famous drive excels under the high stress requirements of performance boats. Heavy duty, yet entirely hydrodynamic.



BRAVO TWO

The favourite drive for big family cruisers, getting on plane quickly then facilitating lower engine revolutions for superior fuel economy.

MERCUISER DRIVES

MORE CHOICE FOR MORE PLEASURE

Boaters are always looking for more power, more options, more durability which is why MerCruiser produces the biggest range of drives in the business. We cover every application imaginable and whether you choose Alpha or Bravo drives with their smooth, quiet shifting or the durable Bravo X Series, or the innovative Dry-Sump Six, you're assured of peak performance and maximum durability.

ALPHA DRIVES

All Alpha drive MPI models feature revised engine-management programming for reduced shift effort and less noise, vibration and harshness.

BRAVO DRIVES

The new Bravo drives are the smoothest-shifting sterndrives available. A new shift lever and back cover on all Bravo models provide a more defined neutral position, and a new clutch design makes shifting dramatically smoother with an 85% reduction in shift-related noise, vibration and harshness. Bravo Three drives get a redesigned thrust bearing for even longer life. And a new ribbed top cap on X models provides greater structural integrity and facilitates cooling.



MAINTENANCE-FREE HINGE PINS

All Alpha and Bravo drives have maintenance-free hinge pins. No more lubrication required, ever.



BRAVO THREE

The leader in twin, counter-rotating propeller sterndrives, designed for rail-like holding through turns and still faster acceleration.



BRAVO X

Designed specially for big block 8.1-litre engines, this is a super strength drive with high performance attributes.



BRAVO XR

Direct from the Factory Class winners' circle and available for your boat, the XR Drives are all about performance and being first to the checkered flag.

INBOARDS

EXHILARATION IS ASSURED

260 hp – 420 hp



The MerCruiser reputation for unsurpassed performance and reliability extends to our inboards which feature virtually maintenance-free Horizon™ engine technology plus 3 years of factory-backed product protection and 3-year extended maintenance cycle.

But that's only the beginning of the good news. We offer inboards for a wide range of applications in horsepowers ranging from 260 to 420 hp. And now all MPI inboard models come complete with SmartCraft technology which monitors and fine-tunes your engine for peak efficiency and performance through features like our multi-port fuel injection system, Engine Guardian and more. A powerful combination of protection and performance.



AIR-ACTUATED SINGLE-POINT WATER DRAIN

A hand-operated air pump drains the raw-water cooling circuit through two easily accessible valves located low on the engine. Standard or optional depending on specific model.

DRY-JOINT EXHAUST

Used on all MerCruiser V-6 and V-8 models, our dry-joint exhaust designs virtually eliminate the risk of water finding its way into critical engine components.

ENGINE GUARDIAN

A standard feature on all MerCruiser MPI engines with SmartCraft technology, Engine Guardian works with the Audio Warning System to monitor and protect against engine, drive or transmission damage if monitored temperatures or pressures vary from the normal range.

MULTI-PORT FUEL INJECTION SYSTEM

The MPI system injects fuel into an intake port adjacent to each cylinder. This results in a precisely tuned and efficient engine offering exceptional acceleration, throttle response and dependable turnkey starting.

8.15 INBOARD ELECTRIC SHIFT TRANSMISSION

All inboard engines equipped with SmartCraft DTS feature the new electric shift transmission. The system delivers reliable shifts and exceptional durability via solenoid-controlled hydraulics to shift gears and pressure sensors that monitor clutch-pack performance for Transmission Guardian.

TOW SPORTS INBOARDS

THE POWER TO HAVE FUN

Who could ever imagine a world without watersports? We couldn't, which is why we produce inboards to help Tow Sports enthusiasts maximise the fun factor. Our entire line-up, from the stellar Black Scorpion to the new MX 6 MPI™ SmartCraft model offers the kind of performance to get you skimming over the water thanks to responsive, reliable power which is founded on 40 years of practice.



MERCURY MERCUISER PETROL ENGINE SPECIFICATIONS



SmartCraft	Horsepower	Displacement Liter/CID	Cylinders	Fuel System	Digital Throttle & Shift Option	Closed-Cooling	Water Drain System*		Drive Options	Total Weight (kg)	
							Alpha	Bravo/Inboard			
STERNDRIVES											
496 MAG High Output (HO)	Yes	425 hp (317 kW)	8.1/496	V-8	MPI	Yes	Standard	N/A	Standard	Bravo One X, Bravo Two X, Bravo Three X/XR, Bravo One XR	Bravo One X, XR: 544 Bravo Two X: 551 Bravo Three X, XR: 556
496 MAG	Yes	375 hp (280 kW)	8.1/496	V-8	MPI	Yes	Standard	N/A	Standard	Bravo One, Bravo Two, Bravo Three, Bravo One XR, Bravo Three XR	Bravo One: 514 Bravo Two: 553 Bravo Three: 557
MX6.2 MPI Horizon	Yes	320 hp (239 kW)	6.2/377	V-8	MPI	Yes	Standard	N/A	Standard	Bravo One, Bravo Two, Bravo Three	Bravo One: 475 Bravo Two: 482 Bravo Three: 486
MX6.2 MPI	Yes	320 hp (239 kW)	6.2/377	V-8	MPI	Yes	Kit	N/A	Optional	Bravo One, Bravo Two, Bravo Three	Bravo One: 451 Bravo Two: 459 Bravo Three: 463
350 MAG MPI Horizon	Yes	300 hp (224 kW)	5.7/350	V-8	MPI	Yes	Standard	N/A	Standard	Bravo One, Bravo Two, Bravo Three	Bravo One: 475 Bravo Two: 482 Bravo Three: 486
350 MAG MPI	Yes	300 hp (224 kW)	5.7/350	V-8	MPI	Yes	Kit	N/A	Optional	Alpha, Bravo One, Bravo Two, Bravo Three	Alpha: 433 Bravo One: 451 Bravo Two X: 459 Bravo Three X: 463
5.0 MPI	Yes	260 hp (194 kW)	5.0/305	V-8	MPI	Yes	Optional or Kit	Standard	Optional	Alpha, Bravo One, Bravo Two, Bravo Three	Alpha: 433 Bravo One: 451 Bravo Two: 459 Bravo Three: 463
5.7L	No	250 hp (186 kW)	5.7/350	V-8	TKS Carb	No	Kit	N/A	N/A	Alpha, Bravo One, Bravo Two, Bravo Three	Alpha: 430 Bravo One: 449 Bravo Two: 456 Bravo Three: 460
5.0L	No	220 hp (164 kW)	5.0/305	V-8	TKS Carb	No	Kit	N/A	N/A	Alpha, Bravo One, Bravo Two, Bravo Three	Alpha: 430 Bravo One: 449 Bravo Two: 456 Bravo Three: 460
4.3 MPI	Yes	220 hp (164 kW)	4.3/262	V-6	MPI	No	Optional or Kit	Standard	Optional	Alpha, Bravo Two, Bravo Three	Alpha: 393 Bravo Two: 414 Bravo Three: 419
4.3L	No	190 hp (142 kW)	4.3/262	V-6	TKS Carb	No	Optional or Kit	N/A	N/A	Alpha, Bravo Two, Bravo Three	Alpha: 385 Bravo Two: 405 Bravo Three: 410
3.0L	No	135 hp (101 kW)	3.0/181	Inline-4	TKS Carb	No	Optional or Kit	Standard	N/A	Alpha	Alpha: 288
INBOARDS											
8.15 High Output (HO)	Yes	420 hp (313 kW)	8.1/496	V-8	MPI	Yes	Standard	N/A	Standard	N/A	513
8.15 Horizon	Yes	370 hp (276 kW)	8.1/496	V-8	MPI	Yes	Standard	N/A	Standard	N/A	513
MX6.2 MPI Horizon	Yes	320 hp (239 kW)	6.2/377	V-8	MPI	Yes	Standard	N/A	Standard	N/A	431
MX6.2 MPI	Yes	320 hp (239 kW)	6.2/377	V-8	MPI	Yes	Optional	N/A	Optional	N/A	390
350 MAG MPI Horizon	Yes	300 hp (224 kW)	5.7/350	V-8	MPI	Yes	Standard	N/A	Standard	N/A	427
350 MAG MPI	Yes	300 hp (224 kW)	5.7/350	V-8	MPI	Yes	Optional	N/A	Optional	N/A	390
5.7L	No	260 hp (194 kW)	5.7/350	V-8	TKS Carb	No	Kit	N/A	N/A	N/A	400
TOW SPORTS INBOARDS											
MX 6.2 Black Scorpion	Yes	340 hp (254 kW)	6.2/377	V-8	MPI	No	N/A	N/A	N/A	N/A	373
Black Scorpion	Yes	330 hp (246 kW)	5.7/350	V-8	MPI	No	N/A	N/A	N/A	N/A	373
350 MAG MPI	Yes	315 hp (235 kW)	5.7/350	V-8	MPI	No	N/A	N/A	N/A	N/A	369
5.7L	No	270 hp (201 kW)	5.7/350	V-8	TKS Carb	No	N/A	N/A	N/A	N/A	379

General Notes

- Approximate engine and drive weights. Individual units may vary slightly.
- Option availability determined by boat manufacturer within its boat model offerings.
- Performance obtained and corrected in accordance with SAE J1228 crankshaft power.
- All models and specifications are subject to change without notice or without incurring obligations to modify previously manufactured products.

* MerCruiser offers a variety of easy water drain strategies depending upon application, design and in some cases by boat model. The Alpha drain systems typically involve turning a handle or removing quick-connect hoses to drain. The Bravo/Inboard water drain systems are also found on most closed-cooled models and are activated by pressurized air. Some OEM customers request these systems be removed.

CUMMINS MERCUISER DIESEL

THE NEW WAVE IN DIESEL MARINE POWER

Cummins MerCruiser Diesel delivers a new wave of marine diesel power that brilliantly advances the science of marine diesel technology. Improvements in fuel efficiency translate into extended range and savings at the pump. These environmentally friendly engines offer comfortable cruising and benefit from low noise and vibration. Improvements in compact designs and power to weight ratios, means that the MerCruiser Diesel series engines are now a reality for a far wider range of pleasure boats and commercial applications.



QUICKSILVER®

QUICKSILVER PRECISION PARTS AND ACCESSORIES. BECAUSE THE BEST DESERVES THE BEST

Quicksilver is a premium line of engine parts, accessories, oils, lubricants and engine-care products that are designed, built and tested to the same high quality standards of performance and corrosion resistance as your engine.



SPECIALLY FORMULATED OILS

Quicksilver oils and lubricants are specifically developed to provide maximum performance and protection in the unique operating environment of marine engines, keeping them running smoothly, clean and virtually trouble-free.

QUICKSILVER PROPELLERS

Quicksilver manufactures a complete line of standard and custom propellers designed to maximize the performance of MerCruiser sterndrives and diesel drives. In fact, no one offers more high-quality aluminium and stainless steel propellers.



PERFORMANCE VENT SYSTEM® (PVS)

Our exclusive Performance Vent System (PVS) lets you custom-tune the venting of the prop blades for maximum acceleration and cruising performance.

SEE YOUR DEALER ABOUT SELECTING THE RIGHT PROPELLER FROM QUICKSILVER'S WIDE OFFERING



BRAVO I MAXIMUS VENSURA REVOLUTION 4 MIRAGE PLUS HIGHFIVE LASER II VENGEANCE TROPHY SPORT ALPHA 4 BLACK MAX

MERCURY MerCruiser.



The quality system of
Marine Power Europe Inc
is ISO 9001:2000 certified